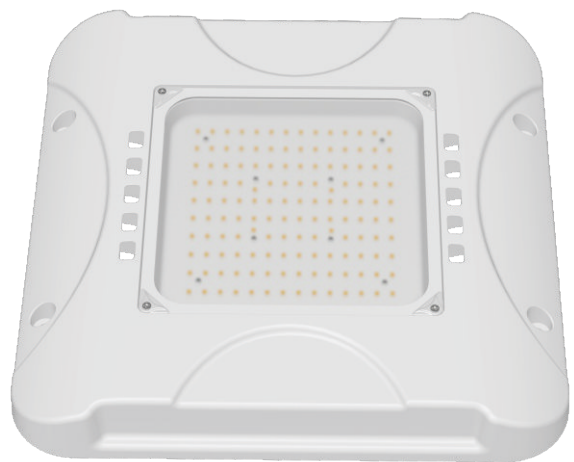
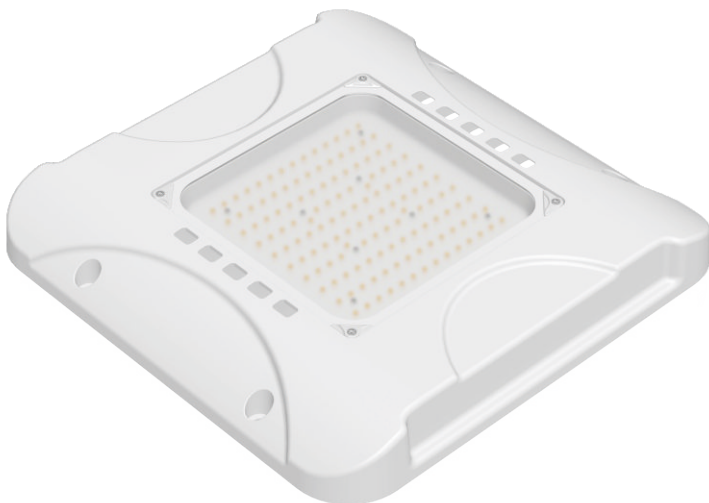


LED Gas Station Light BRIGHTEN YOUR LIFE

NEW LED TECHNOLOGY THAT ALLOWS THE
COEXISTENCE OF ENVIRONMENTAL
PROTECTION AND ENERGY SAVING

Benefits

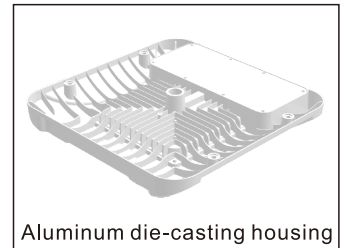
1. Internal UL listed power supply.
2. Replace conventional Gas Station Lights.
3. Precision Die Cast Aluminum Heat Sinks.
4. Fade Resistant Powder Coat Finish.
5. Easy & quick Installation.
6. CE ROHS listed.



BB-CSD-XXXX-C1

Features

1. Aluminum die-casting heat sinks is good for heat dissipation.
2. It's major to replace the conventional gas station light.
3. Green, energy saving, long and reliable life of 50,000 hours.
4. No RF interference, No IR/UV radiation ,no mercury pollution.
5. Wide colour availability in degrees Kelvin(K),2700-6700K.
6. Streamline exterior design, beautiful appearance.
7. Environment friendly ,energy saving (70~80%).
8. Special circuit design, each LED work separately, avoiding the single broken LED influence problem.



Application

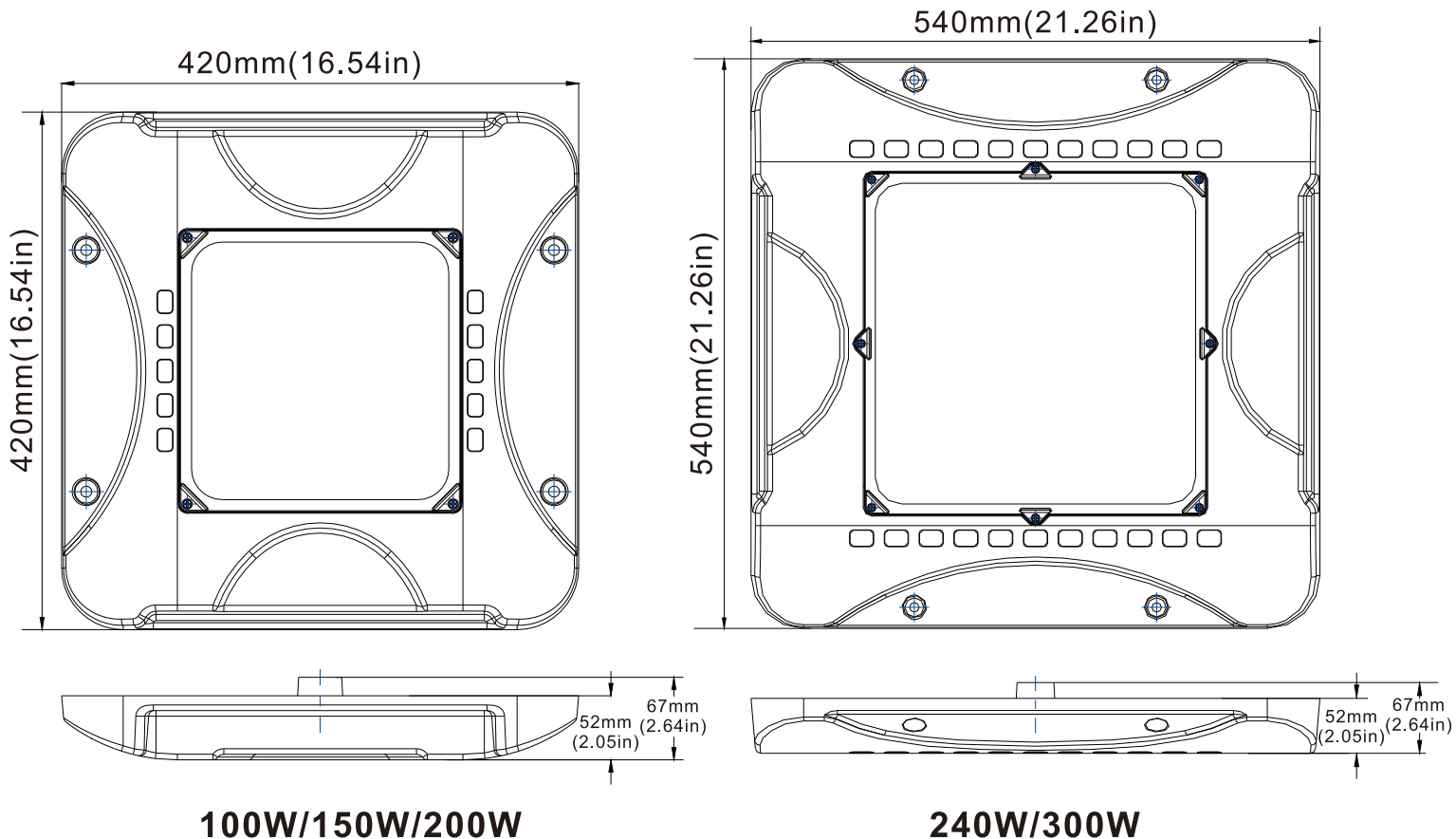
1. Gas station lighting.
2. Petroleum canopies lighting.
3. CNG fueling stations lighting.
4. Low-medium bay general lighting.
5. Soffits lighting.



SPECIFICATIONS

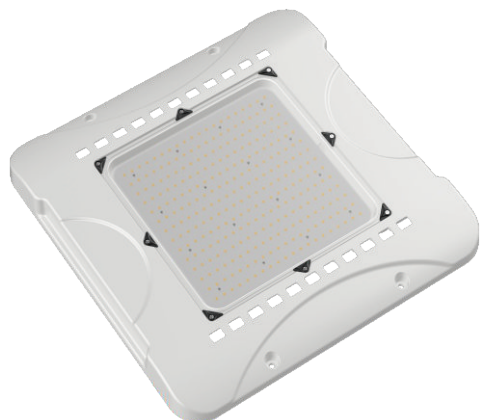
Power	100W	150W	200W	240W	300W
Model	BB-CSD-100W-C1	BB-CSD-150W-C1	BB-CSD-200W-C1	BB-CSD-240W-C1	BB-CSD-300W-C1
Luminous Flux	14000lm	21000lm	28000lm	33600lm	42000lm
Replacement	HPS 300W	HPS 400W	HPS 600W	HPS 800W	HPS 1000W
Light Source	SMD LED				
Luminous Efficacy	140lm/w				
Operation Temp.	-40 to +45°C				
CCT	3000K WW / 4100K NW / 5000K DW / 5700K CW				
CRI	70+				
Life Span	50,000 hours at 25°C				
Voltage	100-277VAC/50-60Hz 200-480VAC/50-60Hz Available				
Driver	Internal LED Driver				
Dimming	Available				
Beam Angle	120°				
PF	>0.95				
Warranty	5Years				

DIMENSIONAL DRAWING



PROJECTS

By using our 150W Gas Station Light to replace 400W Metal Halide bulb for traditional petrol station lighting in world filling station ,the customer is now able to save a lot per month from his electric bill.



Replace



150W LED = 400W HPS/HID

Note:

- Don't take the LED lamp apart.
- The LED lamp must work under the right voltage according to the specification.

PACKING INFO



Packaging	Dimensions (L*W*H)	N.W	G.W	Volume weight
100W/150W/200W 1pcs/Box	465*460*120mm	3.5kg	4.5kg	6.5kg
240W/300W 1pcs/Box	585*580*120mm	4.5kg	5.5kg	10.0kg