



LED Solar Area Light

BRIGHTEN YOUR LIFE

NEW LED TECHNOLOGY THAT ALLOWS THE
COEXISTENCE OF ENVIRONMENTAL
PROTECTION AND ENERGY SAVING

Benefits

1. Replace conventional Area Lights
2. Precision Die Cast Aluminum Housing
3. Fade Resistant Powder Coat Finish
4. Easy Installation
5. CE ROHS listed



BB-SLD-XXX-AR-B1

15W
20W
25W



BB-SLD-XXX-AR-B2

20W
25W
40W



BB-SLD-XXX-AR-B3

50W
80W
100W

Features

1. Beam angle:120 degrees.
2. Aluminum die-casting heat sinks is good for heat dissipation.
3. It's major to replace the conventiona area light.
4. Green, energy saving, long and reliable life of 50,000 hours.
5. No RF interference, No IR/UV radiation ,no mercury pollution.
6. Wide colour availability in degrees Kelvin(K),2700-6700K.
7. Streamline exterior design, beautiful appearance.
8. Environment friendly ,energy saving (70~80%).
9. Special circuit design, each LED work separately,
avoiding the single broken LED influence problem.



Application

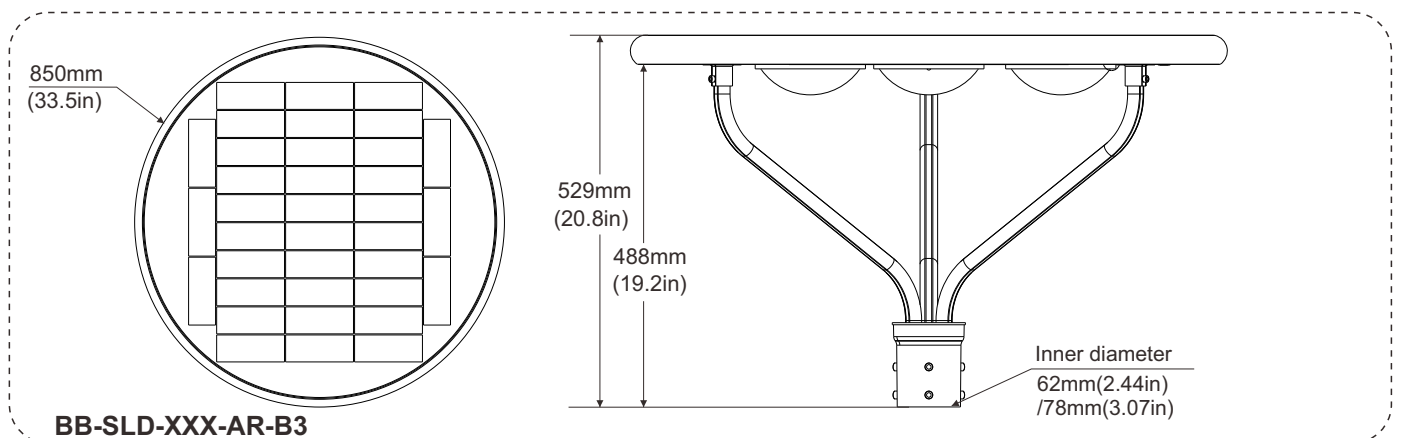
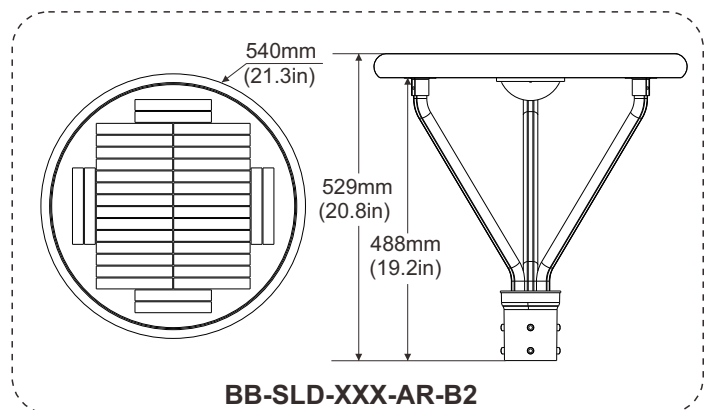
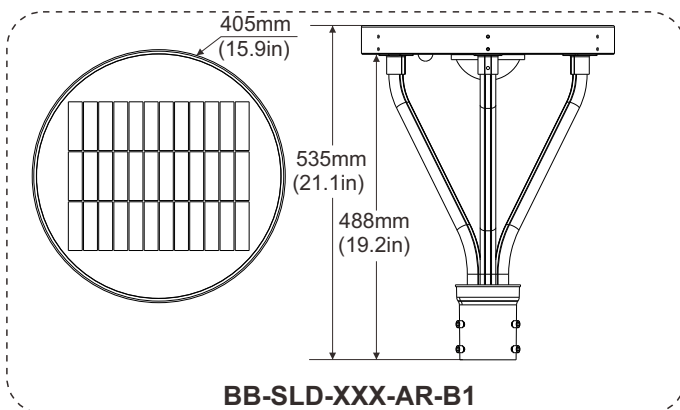
- 1.Area roadway/roadway lighting.
- 2.Parking areas lighting.
- 3.Airports lighting.
- 4.Streetscapes lighting.
- 5.Campuses lighting.



SPECIFICATIONS

| | | | | | | | | | |
|-----------------------|--|------------------|------------------|------------------|------------------|------------------|------------------|------------------|-------------------|
| LED MAX Power | 15W | 20W | 25W | 20W | 25W | 40W | 50W | 80W | 100W |
| Model | BB-SLD-15W-AR-B1 | BB-SLD-20W-AR-B1 | BB-SLD-25W-AR-B1 | BB-SLD-20W-AR-B2 | BB-SLD-25W-AR-B2 | BB-SLD-40W-AR-B2 | BB-SLD-50W-AR-B3 | BB-SLD-80W-AR-B3 | BB-SLD-100W-AR-B3 |
| Solar panel Max power | 18V/18W | 18V/27W | 18V/30W | 18V/27W | 18V/30W | 18V/45W | 18V/60W | 18V/100W | 18V/120W |
| Battery capacity | 12.8V/6AH | 12.8V/20AH | 12.8V/18AH | 12.8V/20AH | 12.8V/18AH | 12.8V/24AH | 12.8V/24AH | 12.8V/30AH | 12.8V/36AH |
| Luminous Flux | 2250lm | 2400lm | 3000lm | 3000lm | 3750lm | 5000lm | 7500lm | 9600lm | 12000lm |
| Luminous Efficacy | 150lm/w | 120lm/w | 120lm/w | 150lm/w | 150lm/w | 120lm/w | 150lm/w | 120lm/w | 120lm/w |
| Mounting Height | 3-4m | 3-5m | 3-5m | 3-5m | 3-5m | 6-7m | 8-9m | 9-10m | 9-10m |
| Space Between Light | 5-10m | 10-15m | 10-15m | 10-15m | 10-15m | 15-20m | 20-30m | 30-40m | 40-50m |
| Solar Panel Dimension | Dia405*41mm | | | Dia540*41mm | | | Dia850*41mm | | |
| Sensor | Default:PIR Sensor&Time Controller together. | | | | | | | | |
| Controller | PWM controller, MPPT controller optional | | | | | | | | |
| Battery | Ternary Li-ion battery, LiFePO4 battery optional | | | | | | | | |
| Discharge Time | More than 10-12hours | | | | | | | | |
| Charge Time | 6-7hours(with enough strong shine) | | | | | | | | |
| Solar Cell | High efficiency imported silicon solar cell | | | | | | | | |
| Light Source | SMD LED | | | | | | | | |
| Operation Temp. | -40 to +45°C | | | | | | | | |
| CCT | 2700K SW / 3000K WW / 4100K NW / 5000K DW / 5700K CW | | | | | | | | |
| Life Span | 50,000 hours | | | | | | | | |
| IP | 65 | | | | | | | | |
| Beam Angle | 120° | | | | | | | | |
| Warranty | 3Years | | | | | | | | |
| Other | Mains complementary solar energy is available,pls contact sales for this function price. | | | | | | | | |

DIMENSIONAL DRAWING



WORKING CHARACTERISTICS

Default setting as below :

Timmer Control & PIR Sensor Control

- 1.If with insufficient ambient light,sensored dark,lamp will on. First Time Phase 4 hours ,
When motion is detected,it will 100% brightness. When no motion detected after hold time 60s, and then switches to 30% brightness after stand-by period.
- 2.Second Time Phase 3 hours.When motion is detected,it will 70% brightness.
When no motion detected after hold time 60s,and then switches to 30% brightness after stand-by period.
- 3.Third Time Phase 3 hours.When motion is detected,it will 50% brightness.
When no motion detected after hold time 60s, and then switches to 30% brightness after stand-by period.
- 4.Forth Time Phase 6 hours.When motion is detected,it will 70% brightness.
When no motion detected after hold time 60s,and then switches to 30% brightness after stand-by period.
- 5.While sensed daytime,lamp will off.

Note : IoT Smart Control , MPPT Smart Control all available in 20w 25w 40w 50w 80w 100w. If you need know more,pls contact salesman.

PROJECTS

By using our 25W Area Light to replace 75W Metal Halide bulb for parking area lighting fixtures,the customer is now able to save a lot per month from his electric bill.



Replace

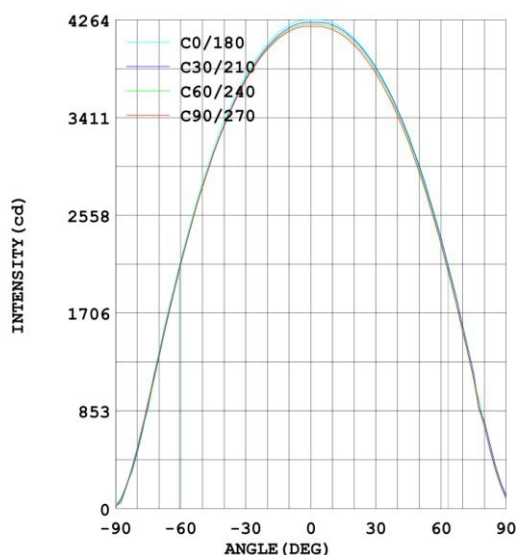
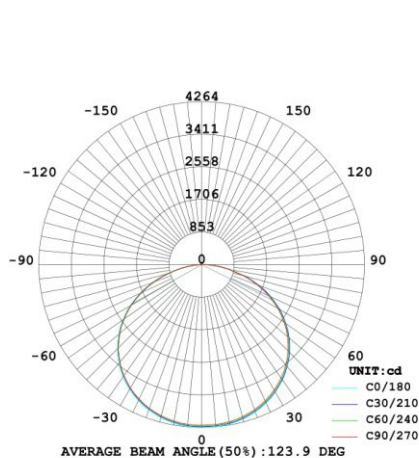


25W LED = 75W MH

Note :

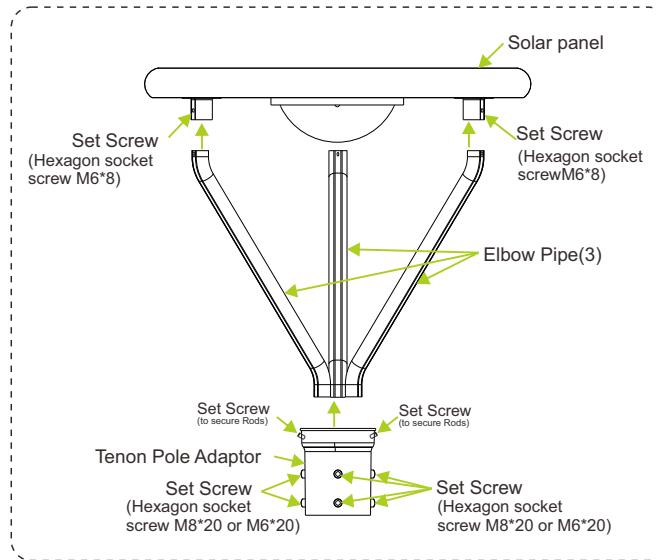
- Don't take the LED lamp apart.
- The LED lamp must work under the right voltage according to the specification.

LUMINOUS INTENSITY DISTRIBUTION



ASSEMBLY

Fixture assembly

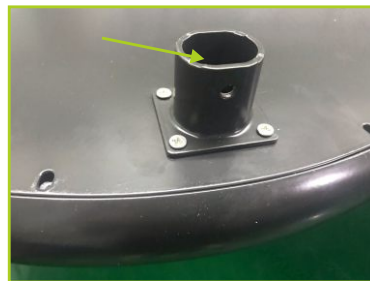


- Step1: Secure the elbow pipes to the lamp body with 3 screws(Hexagon socket screws M6*8).
- Step2: Secure the Tenon Pole Adaptor and elbow pipes with 3 screws(Hexagon socket screws M6*12).
- Step3: Check that all screws are not loose ,and then complete the fixture assembly.

Assemble physical map



1.Above are all the accessories.



2.The lamp has three places where the elbow is installed.



3.Use a M6*8 screw to secure a elbow pipe, a total of three elbow pipes.



4.Fix the elbow pipes with three M6*12 screws.



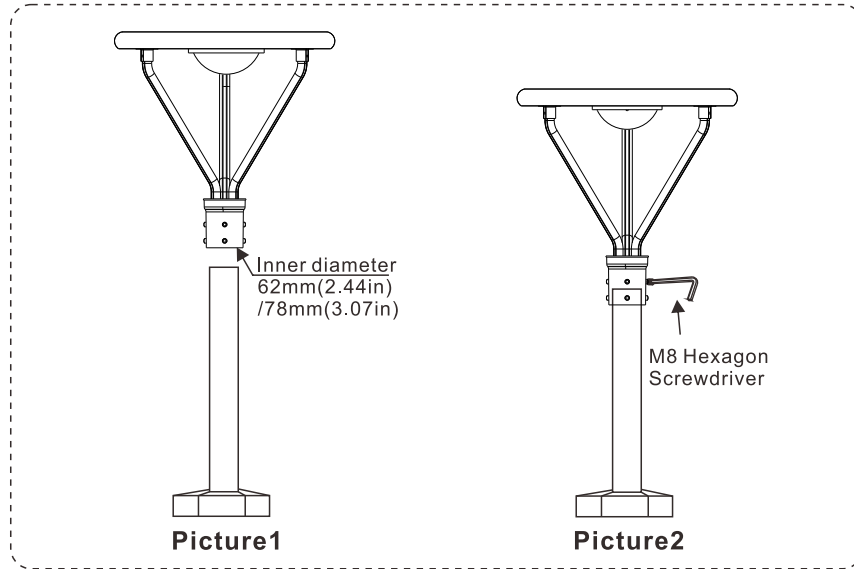
5.If you only need 80mm (3.15in) tenon pole adaptor, use 6pcs M8*20 screws to fix it,as shown above.



6.If you need 62mm (2.44in) tenon pole adaptor, use 3pcs washers and 6pcs M6*20 screws to fix it.

INSTALLATION

Pole mounting(no wiring)



Step1: Turn off the power before installation.

Step2: Secure the Tenon Pole Adaptor and pole with 6 screws.

Step3: Check that all screws are not loose ,and then complete the pole mounting.

The screws are different used for the different diameters of the rods .

*If you need 62mm (2.44in) tenon pole adapter, you need to follow these steps before installing:



Figure1



Figure2



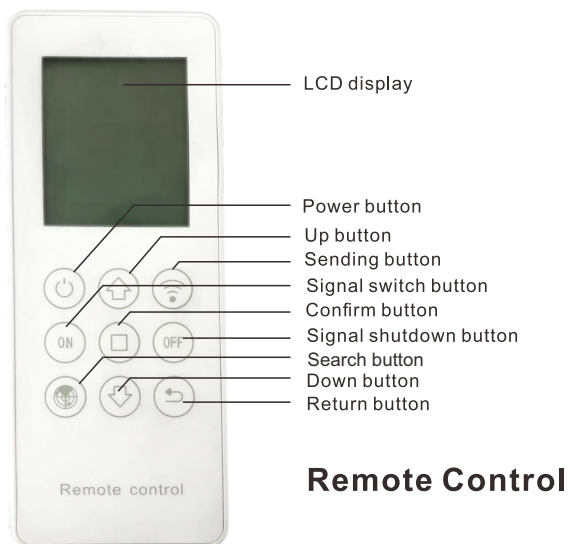
Figure3

1. When you receive the light, as shown in Figure 1. There are 3pcs washers and 6pcs M6*20 screws. Pull the screws in the direction of the arrow.
2. When the screws and washers are in the position of Figure 2, place the lights into the pole.
3. Then tighten the screws as shown in Figure 3.

*If you only need 80mm (3.15in) tenon pole adapter, use 6pcs M8*20 screws to fix it. Do not use M6*20 screws and washers.

Remote Control

The remote control is not provided by default, If you need, please contact sales.



Accessories

Optional: Anti-bird net

If necessary, please contact sales.

Function: Prevent birds from staying on the lamp and affect the work of the lamp.



PACKING INFO



| Item | Packaging | Carton Size(mm) (L*W*H) | N.W | G.W | Volume weight |
|-----------------|-----------|----------------------------|--------|--------|---------------|
| B1:15W/20W/25W | 1pc/CTN | 480*480*170mm | 6.5kg | 8.0kg | 8.0kg |
| B2:20W/25W/40W | 1pc/CTN | 590*590*170mm | 9.2kg | 10.5kg | 12.0kg |
| B3:50W/80W/100W | 1pc/CTN | 920*920*180mm | 18.2kg | 19.9kg | 31.0kg |